



Welcome to České Budějovice



Cross-country Skiing Paradise



South Moravian Region



# ADVENT TIME



FIS NORDIC WORLD SKI CHAMPIONSHIPS  
**LIBEREC 2009**  
 CZECH REPUBLIC • 18. 2. - 1. 3. 2009

## FIS NORDIC WORLD SKI CHAMPIONSHIPS LIBEREC 2009

# 18. 2. - 1. 3. 2009

www.liberec2009.com

# TIMETABLE

DATE	CROSS-COUNTRY		SKI JUMPING		NORDIC COMBINED		CEREMONIES	
	TIME	EVENTS	TIME	EVENTS	TIME	EVENTS	TIME	EVENTS
MON 16. 2.	10:00	Training			10:00	Training CC		
	17:00	Team Info Meeting			16:00	Official Training HS 100		
TUE 17. 2.	10:00	Training	12:00	Official Training Ladies HS100	10:00	Training CC		
					16:00	Official Training HS 100		
WED 18. 2.	9:00	Official Training Ladies	9:00	Official Training Ladies HS100	11:30	Official Training HS 100	20:00	Tipsport Arena
	10:00	Qualification Race Ladies 5 km C	14:00	Official Training Men HS100	14:00	Training CC		Opening Ceremony
	10:30	Official Training Men						
	11:30	Qualification Race Men 10 km C						
THU 19. 2.	12:15	Official Training						
	9:30	Official Training Ladies	9:00	Official Training Men HS100	13:00	Official Training CC	20:30	Medal Plaza
	11:30	Interval Start Ladies 10KmC	12:00	Official Training Ladies HS100	14:15	Mass start 10 km		CC Ladies 10 km C
FRI 20. 2.	15:15	Official Training			16:15	Trial Round		NC Mass
					17:15	Mass start HS 100		
	11:30	Official Training Men	9:30	Trial Round	15:00	Training CC	20:00	Medal Plaza
	13:00	Interval Start Men 15 km C	10:30	Ladies Individual HS 100				SJ Ladies HS 100 ind.
SAT 21. 2.	15:00	Official Training	16:00	Trial Round				CC Men 15 km C
			17:00	Men Qualification HS 100				
	11:30	Official Trainings Ladies	15:00	Trial Round	9:00	Official Training HS 100	20:00	Medal Plaza
SUN 22. 2.	13:00	Ladies Pursuit (7,5KmC+ 7,5KmF)	16:00	Men Individual HS 100	14:30	Training CC		CC Ladies Pursuit
	14:30	Official Training						SJ Men HS 100 ind.
MON 23. 2.	11:30	Official Training Men					20:00	Medal Plaza
	13:00	Men Pursuit (15KmC+ 15KmF)			8:45	Trial Round		CC Men Pursuit
	16:00	Training			9:45	Individual HS 100		NC Individual I.
TUE 24. 2.	11:00	Official Training Ladies and Men	16:00	Official Training Men HS134	10:00	Official Training HS 134		
	13:00	Ladies / Men Sprint F (Qualification)			15:00	Training CC	20:00	Medal Plaza
	13:00	Ladies / Men Sprint F (Final)						CC Ladies Sprint
								CC Men Sprint
WED 25. 2.	9:30	Official Training Ladies and Men	16:00	Official Training Men HS134	10:00	Official Training HS 134	20:00	Medal Plaza
	11:00	Ladies / Men Team Sprint C(Qualif)			14:30	Official Training CC		CC Ladies Team sprint
	13:00	Ladies / Men Team Sprint C(Final)						CC Men Team sprint
	14:30	Official Training						
THU 26. 2.	11:00	Official Training Ladies	16:00	Trial Round	10:00	Trial Round	20:00	Medal Plaza
	13:00	Ladies Relay 4x5KmC/F	17:00	Men Qualification HS134	11:00	Team HS 134		CC Ladies Relay
	16:15	Official Training			15:15	Team 4x5 km		NC Team
FRI 27. 2.	11:00	Official Training Men	15:00	Trial Round	10:00	Official Training HS 134	20:00	Medal Plaza
	13:00	Men Relay 4x10KmC/F	16:00	Men Individual HS 134	15:30	Official Training CC		CC Men Relay
	15:30	Official Training						SJ Men HS 134 ind.
SAT 28. 2.	10:00	Official Training Ladies	15:00	Trial Round	10:00	Trial Round	20:00	Medal Plaza
	13:00	Ladies 30KmF Mass Start	16:00	Men Team HS 134	11:00	Individual HS 134		CC Ladies 30 km F
	16:00	Official Training			15:00	Individual 10 km		NC Individual II.
SUN 01. 3.							15:45	VESEC
	11:30	Official Training Men					16:00	Closing Ceremony
	13:00	Men 50KmF Mass Start						CC Men 50km F

Official International Sponsors of FIS Nordic World Ski Championships Liberec 2009



Official Partners of FIS Nordic World Ski Championships Liberec 2009





# Put Your EYE on...

Dear Readers,  
Leaves have fallen from trees and autumn has definitely taken its role. Temperature in the morning is around zero, and each of us is slowly getting used to it. Better to take a winter jacket on. It won't be warmer this year any more. But we can make a nice cup of warm tea at home, and remember the days of our summer holiday.

For me, November is something like a preparation for Christmas. I am trying to buy as many Christmas gifts as possible, because I hate queueing just before Christmas day. And I think you will agree with me, better in time than never. This year the first advent Sunday is on November 30. Don't forget to make or buy an advent wreath, and each Sunday before Christmas light one candle.

In the winter double copy you will find a lot of tips for autumn walks, winter holidays, or informations about Christmas traditional events. It's up to you to choose what you prefer. I hope the snow will arrive on time and this Christmas will be white as it should be. But remember – there will be a lot of skiing fans in the mountains, so prepare for long queueing there!

And of course, have a nice and peaceful Christmas. I hope that little Jesus, Santa Klaus or Father Frost will bring you everything what is among your greatest wishes. And take care for your pets during New Year's fireworks. And also good health, and seeing you soon next year!

*Martina Štěpánková*  
Vice Editor-in-Chief

**Tourist magazine Travel EYE  
November–December 2008**

**Published by:** Miloš Uhlíř – BASET

**Editor-in-Chief:**

Luděk Sládek (ludek@baset.cz)

**Vice Editor-in-Chief:**

Martina Štěpánková (martina@baset.cz)

**Editor:** Petr Šrain (petr@baset.cz)

**Translation:** Ivana Muková

**Address:** Kubelíkova 30, 130 00 Praha 3

**Tel.:** +420 222 944 817; **Fax:** +420 226 015 033

**E-mail:** kam@baset.cz, www.kampocesku.cz

**Registered:** MK ČR E 17866, ISSN 1802-8659

**Graphic design and layout:** Jarmil Dufek

**Printed:** Tigis s. s. r. o.

The publisher is not responsible for the contents of adverts and PR articles.

## In this Issue

### EYE in Focus

How Did You Vote? 2

EYE to Your Home 2

Jana, Kája and Other Heroes... 4

Advent Time... 4

### EYE on Region

Winter Invitation to the Ústí Region 6–7

Děčín in the Christmas Rhythm 8

Royal Town of Chomutov 9

Cross-country Skiing Paradise 13

Wine and hundred years old history 14

Brno a Regiontour 2009 15

### EYE on Trips

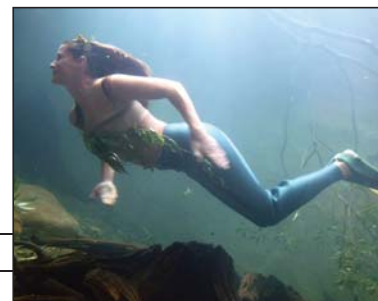
Two lives, or paint what you see 10

What is Hidden under the River Surface? 11

Before Winter Time will Come to Písek... 12

### EYE on Transport

Czech Railways 16



(a letter from Pilsen, September 24, 2008)

Dear editors,

Let me introduce myself. My name is René Neupauer and at the time I am at the prison in Plzeň-Bory, where I guide a geographical club. I wanted to ask you for several older magazines which our club needs. Thank you beforehand.

But if you consider me being too arrogant, accept my apologies and wish you much success.

R. Neupauer 4/6, 1977

(a letter from Pilsen, October 20, 2008)

Dear Ms. Štěpánková,

Regards from Pilsen and many thanks (from our geographical club) for having sent us copies of your magazine EYE which we enjoy very much.

I would like to use your offer, but don't want to use your kindness. We would need your help. I don't know how much you are in connection with the publisher Baset but we would like to have the books it published: about Labské pískovce National Parks (Českosaské Švýcarsko), Broumovsko region (Adršpach), Kokořínsko region and Moravský kras (Moravian Karst). Also castles and ruins are interesting for us, as well as Slovak mountains, the Dolomites and the Pyrenees.

I would like politely to ask you – if possible – to send us several books (or guides) about these themes. They can be also damaged or incomplete books.

Wish you nice days and regards to all your editors team.

Your sincerely,

Neupauer

Mr. Neupauer,

Ways of our magazine are various, the proof of which is your letter. I personally am happy that our magazine is useful also in the organization like that. I wish you your stay in Bory is as nice as possible, and that your next path leads on more correct marks.

Luděk Sládek, editor-in-chief

# How Did You Vote?

**These public and non-systematic inquiries were done on our web site [www.kampocesku.cz](http://www.kampocesku.cz). It is only a rough overview of respondents who have visited it. The results have been taken on October 21, 2008.**

-red-

## How do you like a new magazine EYE?

(published 12/1, 2007)

It's nice. (Votes: 254 / 46.18 %)

An interesting change. I quite like it!

(Votes: 122 / 22.18 %)

So-so. (Votes: 97 / 17.64 %)

It's too bad. (Votes: 77 / 14.00 %)

**Votes Altogether: 550**

## Do you think that Information Centres in the Czech Republic are useful?

(published 12/29, 2007)

Yes, I do. (Votes: 166 / 23.51 %)

Partially. (Votes: 238 / 33.71 %)

Not very much. (Votes: 143 / 20.25 %)

No, I don't. (Votes: 159 / 22.52 %)

**Votes Altogether: 706**

## What castle I DON'T have in EYE to visit?

(published 9/10, 2008)

Karlštejn (Votes: 59 / 6.37 %)

Konopiště (Votes: 50 / 5.40 %)

Křivoklát (Votes: 71 / 7.67 %)

Hluboká nad Vltavou (Votes: 52 / 5.62 %)

Bouzov (Votes: 54 / 5.83 %)

Loket (Votes: 55 / 5.94 %)

Český Krumlov (Votes: 56 / 6.05 %)

Sychrov (Votes: 59 / 6.37 %)

Dětenice (Votes: 90 / 9.72 %)

Pernštejn (Votes: 104 / 11.23 %)

Lednice (Votes: 94 / 10.15 %)

Kroměříž (Votes: 53 / 5.72 %)

Slezskostravský hrad (Votes: 73 / 7.88 %)

Špilberk (Votes: 56 / 6.05 %)

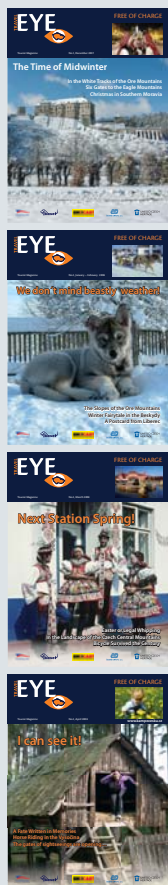
**Votes Altogether: 926**

# EYE to Your Home

You can order our magazine EYE to be brought by post straightly to your home. Since January 2009 you can have our magazine to be delivered at your private address. Subscription price is 252,- CZK for all 9 copies in 2009.

Subscription Orders:  
 Editor Office EYE  
 (Redakce magazínu  
 KAM po Česku)  
 Kubelíkova 30, 130 00 Praha 3  
 E-mail: [kam@baset.cz](mailto:kam@baset.cz)  
 Orders also on:  
[www.kampocesku.cz](http://www.kampocesku.cz)

subscription  
**252,- CZK**



# PF 2009

Dear Readers,  
Let me thank you for your interest which you paid to us last year.  
Me and all editors of the EYE magazine wish you only good news in the next year 2009.

Luděk Sládek, Editor-in-chief



Kresba: Marta Krátká

## Put Your EYE on...

### Where "Travel EYE" Can Be Found

A year ago the first copy of magazines "Kam po Česku" and "Travel EYE" was published. A lot of readers are regularly collecting our magazines in Information Centres. We appreciate your interest and thank you for your responds.

Magazines "Kam po Česku" and "Travel EYE" are being prepared for you nine times a year. The list of Tourist Centres, where are magazines are distributed, both brand new and older ones, as well as much more information can be found on your website [www.kampocesku.cz](http://www.kampocesku.cz).

During the year we have sent to the Information Centres blue or white labels with tourist arrow indicating that you can get your magazine here, and they have been put on the doors there. From the New Year you will find the magazines in iron stands there. We are trying to make it the easiest way as possible for our readers.

Editors of EYE Magazine



## Visit [www.kampocesku.cz](http://www.kampocesku.cz)

We appreciate your growing interest in our magazines. We also hear from many Information Centres that the magazines are in only several days after having published sold out. That is the reason why we would like to remind you of the possibility to read our website, [www.kampocesku.cz](http://www.kampocesku.cz).

When you next time will hear that disappointing answer: "We are very sorry, this copy is not available any more," you have two possibilities how to deal with this problem. Either you can subscribe our magazine, or visit our website. We must tell you the secret: on the website there are more numerous and detailed information than in the printed version of the magazine.

Not only you have an access to all archive copies in a simple region classification, but also new articles are published in more detailed versions. Culture programmes are complete there, and there are more pictures and photographs, too. And even you can find there some texts which did not appear in the printed version because there were not enough pages unfortunately.

A winter double-copy of Travel EYE, which you just have in your hands, is dressed in a new clothes, and a similar graphic change is being prepared for [www.kampocesku.cz](http://www.kampocesku.cz). We really appreciate your interest and are looking forward to your comments and responds.

? Your comments and suggestion please sent to the address of the editor, or on [kam@baset.cz](mailto:kam@baset.cz). The most interesting ones will be rewarded.

Jáchym Hruška



## Prague Cats Irish Pub & Restaurant

We would like to invite you to our irish-style pub which is located only few steps from Letná Gardens.

### We can offer you:

- ▶ Midday ready meals as well as specialities from CZK 65.
- ▶ Grilled steaks, czech specialities, pasta, salads, fish or lamb.
- ▶ You can rent our pub for business parties, after parties, celebrations etc.
- ▶ Various sport matches are best watched on our large-screen display.



Letohradská 775/50  
170 00 Praha 7  
Tel.: +420 233 311 925  
+420 603 274 420  
E-mail: info@prague-cats.cz  
[www.prague-cats.cz](http://www.prague-cats.cz)



## Jana, Kája and Other Heroes ...

This March Jana Henychová reached a unique success. With her husky team, she was the first Czech to take part in a race 500 km long in Norway. The journey took 3 days, 20 hours a 6 minutes. As she says, the main purpose was to "survive".

Jana has been racing with her dogs since 1999. Today she has and during nine years she was several times the master of the Czech Republic in a long trace, and became a master of Europe twice as well. This year she wants to take part in a Norwegian race Finnmarkslopet, 1 000 km long. And why? "It's a big challenge," says Jana. "When I was first standing at the start of 100 km race, I couldn't imagine how



I would master such a long trace. A distance of 1 000 km is still quite unimaginable for me." To have a better picture how long 1 000 km is, you can take a journey from Prague to Venezia or to Brussels. EYE keeps its finger crossed for her, best wishes and happy return home.



You may remember the titul page of EYE in January and February – there was Jana's dog Kája as a puppy pictured. Today he is however a strong male, and such personalities Jana will need on her path.  
-lgs-

[www.huskies.cz](http://www.huskies.cz)

## Advent Time...

Like everything around us, also Advent and Christmas are developing in the time. Imagine what wishes the boys during political eras of Masaryk, Gottwald, Husák used to have, and what they wish these days.

Science and technological revolution has reached more consumption among our population, including the youngest generations. But we should realise that advent time is about something else than consuming goods and products. Not everybody start to be a believer,



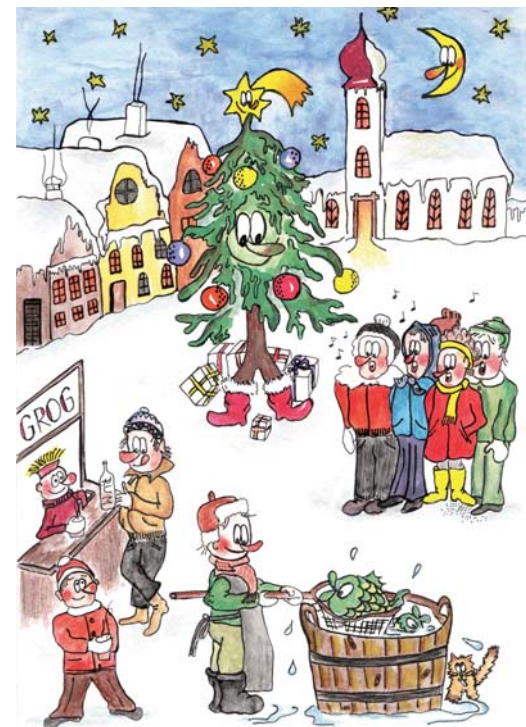
but we should concentrate more on spiritual subject than on matter, at least these days.

I think that everybody who have ever visited Christmas Midnight Mass, have to admit there is something in an event like that, even if one is an absolute non-believer. Sometimes it is enough to have a walk near a church... Feelings, emotion, atmosphere... And the emotions, they are what a human living in a modern society and technological world perhaps needs the most of all.

Advent is not the same as Christmas. It is also lighted trees and people singing carols around them, even in the squares and places. And also St. Nicolaus gifts, Bethlehems, exhibitions or workshops where you can make your own advent wreath, candles, decorations,

traditional Christmas sweeties. Come to enjoy Christmas atmosphere to the places of our towns and romantic churches!

Alois Rula



Drawing: Marta Krátká





# The End of the Year in Vimperk

**Advent – St. Nicholas, Christmas or New Year's Eve Celebrations – all these you can experience in our town. Welcome to our typical Šumava town.**

## Events:

11/30  
and each following Sunday, Advent Concerts in the Town Culture Centre

11/29  
Festive Christmas Tree Lightning at the Main Square

12/6  
Traditional Christmas Fairs in the town centre

12/31  
New Year's Eve train rides for children and adults on the route Vimperk – Kubova Hut and back – the theme "Children Night Stories"

12/31  
New Year's Eve Firework 2009

[www.info.vimperk.cz](http://www.info.vimperk.cz)  
[www.vimperk.cz](http://www.vimperk.cz)



photo: Jan Plánek



# Jindřichův Hradec

## November

Sunday 11/9 (7.00 pm) **AUTUMN CONCERT** (KD Střelnice)

Jindřichohradecký symfonický orchestr  
Entrance: 70 CZK; advance-sale in the cash desk of KD Střelnice

Sunday 11/16 (4.00 pm) **KRÁLÍCI Z KLOBOU-KU** (KD Střelnice)

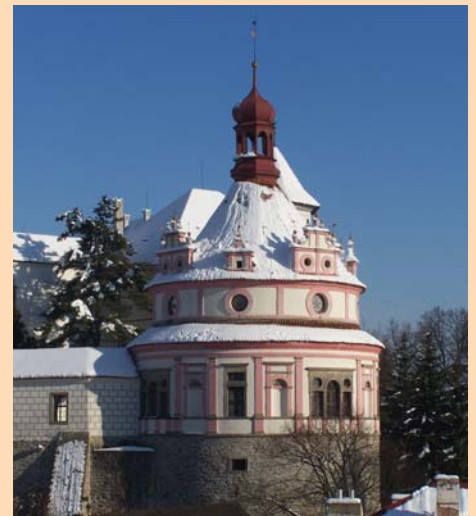
Cultural House Střelnice presents a theatre fairy-tale in the cycle "Children and their parents in the theatre".

Entrance: 45, 40, 35 CZK; estimated end at 5.00 pm

Sunday 11/30 (10.00 am – 4.00 pm) **ADVENT AT THE MILL** – 1st part (Castle Mill)

The Centre "Pohoda" – visitors can make their Advent wreaths, candles, Christmas decorations.

Free Entrance



## December

11/30–12/24 **ADVENT CONCERTS**

e.g. the Chapel of St. Mary Magdalene, or in the Church of St. John Baptist

12/13–14 **TRADITIONAL CHRISTMAS FAIRS**



## Town Information Centre

ul. Panská 136/I, 377 01 JH

Tel.: +420 384 363 546

E-mail: [info@jh.cz](mailto:info@jh.cz)

[www.jh.cz](http://www.jh.cz)

[www.c-budejovice.cz](http://www.c-budejovice.cz)



# Welcome to České Budějovice

## "Advent at Our Place"

11/29 (4.30 pm) **Lightening of the Christmas Tree** (nám. Přemysla Otakara II. Place)

12/1 (2.30 pm) **A Nice Hour** (Seniors meeting on nám. Přemysla Otakara II. Place)

12/2 (4.00 pm) **Christmas Bell Parade** (Children and adults walking through the town centre.)

(5.00 pm) **Vránek's Carols** (Melodies under the Christmas Tree - nám. Přemysla Otakara II. Place)

12/5 (5.45 pm) **Angel's Arrival** (Angel is flying from Černá věž Tower on nám. Přemysla Otakara II. Place)

12/16–20 (9.00 am – 6.00 pm) **Town Hall Christmas Fairs and Handicraft Workshops**



12/20 (4.30 pm) **Bethlehem Light** (In front of the St. Nicholas Church)

12/21 (10.00 am – 6.00 pm) **Christmas in the old town** (Traditional handicraft and art on Piaristické náměstí Place and in Panská Street)

12/22 (5.00 pm) **Live Bethlehem** (Náměstí Přemysla Otakara II. Place)

12/15 – 21 **Christmas Fairs** (Náměstí Přemysla Otakara II. Place)



[www.kampocesku.cz](http://www.kampocesku.cz)



# Winter Invitation to the Ústí Region

Ústí Region is ideal for active relaxation in all seasons, so welcome here also in winter. The Krušné Hory Mountains belong among the most popular areas with many ski centres with pistes of various levels, and also paths complex for cross-country skiing, both for beginners and advanced skiers.

## Let's Go Skiing!

The most famous and also biggest is a ski area Klínovec in Krušné hory Mountains, only 120 km west from Prague. Pistes have all levels and everyday they are fixed, so it is guaranteed to have artificial snow if necessary, in 75% of the area. A snowpark with a ramp, and a ski miniarea is suitable especially for family with children. Also night skiing is possible here.



Other favourite ski centre is Telnice near the town of Ústí nad Labem. For artificial snowing it is possible to ski here until spring.

In the area you can find 7 ski lifts (3.500 persons per hour), with pistes 4.250 m long.

Or you can visit the Centre of Downhill Skiing Bouřňák near the town of Teplice. It is located in the area of villages Mikulov and Moldava in Krušné hory Mountains, only one hour driving speedway D8 from Prague. From the peak of Bouřňák, there are 4 pistes in the direction to Mikulov, one of them to the village Hrob. In Mikulov, there is a slope for children skiing Udolíčko with 2 ski schools.

Lovers of cross-country skiing can enjoy activities of Krušnohorský klubu Club. They manage to link 350 km of modified traces from Lesná ski centre to Mostecko and Chomutovsko regions to Klíny, Dlouhá Louka, Bouřňák, Fojtovice and Telnice in the Ústí region. The "Krušné Hory White Trace" (Krušnohorská bílá stopa) thus has come into existence, one of the biggest complexes of cross-country ski routes in this country. You can ski also in the neighbouring Lužické Hory Mountains.

## Advent and Christmas

If you decide to visit our region in pre-Christmas time, you can enjoy festive atmosphere with some Bethlehems.

Region museum of the town of Děčín prepared a Christmas Bethlehem exhibition "Christmas in the Museum", under open skies you can see a Bethlehem at the Christmas tree at the St. Francis





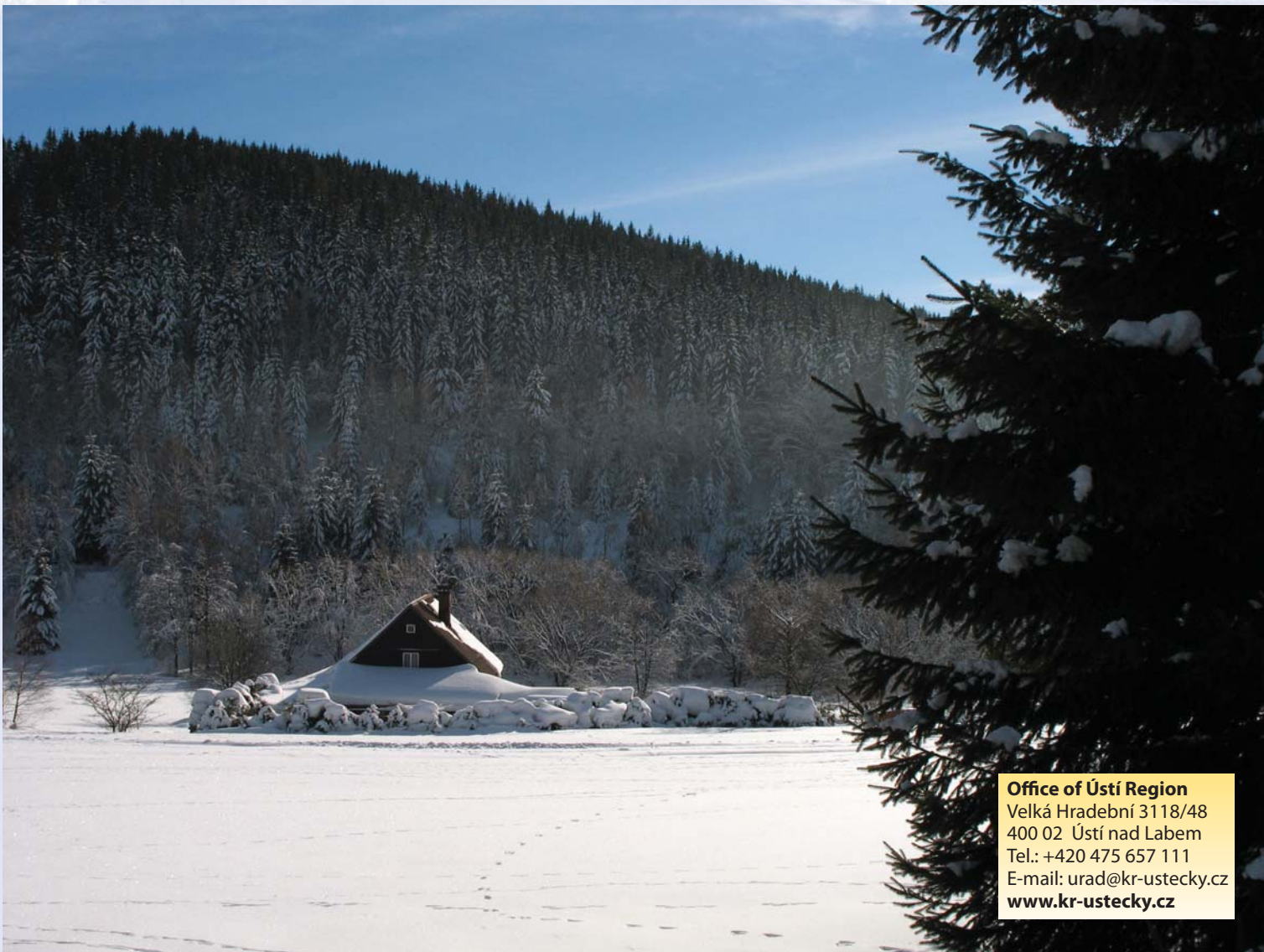


of Assisi Church. In Litvínov you can visit "Christmas in a Loft", an exhibition of Christmas trees, which each one decorated in a different way. There will be also an exhibition of illustrations by Iva Hüttnerová. There will be a live Bethlehem in the castle Červený

hrádek near Jirkov, the town of Chomutov prepares "Christmas in the Museum" too, and on the main square also a big "Advent calendar" with presents. Other "Christmas in a Loft" you can visit in Most. We will finish our tips in Kadaň. Advent Christmas



Market with Christmas tree lightening and plays each hour a different melody. From the festive lightening of the tree until Three Magis holiday you can hear up to 300 melodies. Christmas tree will be decorated by 36 chains consisting of 11.700 lights. In front of the big Christmas tree, there will be 13 smaller trees decorated by children from kindergartens and basic schools in the town of Kadaň. A live Bethlehem in the area of Franciscan Monastery is a final part of all municipal and cultural celebrations. We hope that we offered you a lot of interesting tips for your trips or for a winter holiday, and wish you peaceful Christmas.



**Office of Ústí Region**  
Velká Hradební 3118/48  
400 02 Ústí nad Labem  
Tel.: +420 475 657 111  
E-mail: [urad@kr-ustecky.cz](mailto:urad@kr-ustecky.cz)  
[www.kr-ustecky.cz](http://www.kr-ustecky.cz)



## Děčín in the Christmas Rhythm

During Advent time there will be a lot of events in many towns in this country. You can enjoy Christmas atmosphere in concerts, fairs and exhibitions also at us, in the town of Děčín.

November 29 (1.00 pm – 5.00 pm)

**Advent Afternoon** – Chorus, stands, mulled wine at original cups. The main guest Jitka Zelenková.

Masarykovo náměstí Place

November 30 (1.00 pm)

**Christmas Tree Festive Lightning** – Stands, mulled wine, at 5.00 pm Christmas tree lightning, performance of Janek Ledecký singer.

Masarykovo náměstí Place

December 4 (6.00 pm)

**Christmas Concert Děčín** baroque Quartet, soloist Jarmila Baxová

Museum Děčín

December 6 (2.00 pm)

**Devils' Whirl at the ZOO** – Devilish competitions, St. Nicolaus might come too, marionette theatre, Christmas tree decorating, introducing new animals at the ZOO, historic fencing (swordsman of Exitus in Dubio)

Zoo Děčín – Pastýřská stěna

December 11 (2.00 pm)

**Pre-Christmas Pondering** – A fair with Christmas wreath, candles, decorations and ginger bread making, Christmas tree lightning with



carols singing. Voluntary entrance fee. MC Rákosníček

December 12 (6.00 pm)

**Ave Maria, Christmas 2008** – A festive pre-Christmas charitable concert with an unique dramaturgy based on piano and organ sound.

St. Cross Elevation Church

December 20 – 31 (except December 24)

**Come to Wish All the Best to Animals** at the Zoo Děčín and to Rajské ostrovy, children who will bring a wish or a present for our animal will get 50% entrance fee reduction.

Zoo Děčín – Pastýřská stěna

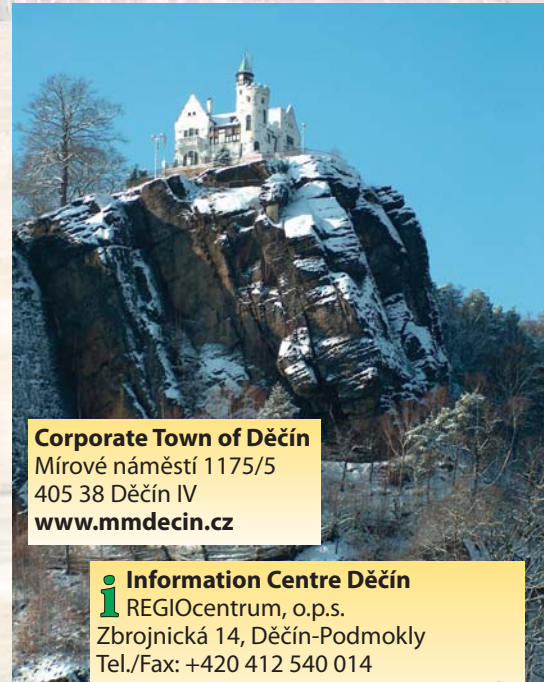
December 25 (2.30 pm)

**Christmas Concert** – OS Březiňáček

St. Francis Church

### Event at the Castle in Děčín

11/29: Petr from Drslavice, Marionette Fairy-tale; 11/30: Verbasum – concert; 12/6: Fairy-tale; 12/7: SoliDeo – concert; 12/13: Snow-white; 12/14 Christmas Fair; 12/20: Fairy-tale, 12/21: Guitar Art Trio – concert.



### Corporate Town of Děčín

Mírové náměstí 1175/5

405 38 Děčín IV

[www.mmdecin.cz](http://www.mmdecin.cz)

### Information Centre Děčín

REGIOcentrum, o.p.s.

Zbrojnická 14, Děčín-Podmokly

Tel./Fax: +420 412 540 014

E-mail: [decin@ceskosaskesvycarsko.info](mailto:decin@ceskosaskesvycarsko.info)

[www.ceskosaskesvycarsko.info](http://www.ceskosaskesvycarsko.info)



## Christmas 2008 in Ústí

November 27, 11.00 am

**Vernissage of T. G. Masaryk Exhibition**

Church of St. Vojtěch

November 30 3.00 pm-4.00 pm

**Advent with horn-blowers from Ústí** (all Advent Sundays)

The Centre of Ústí nad Labem

November 30 5.00 pm

**Advent Concert of CONCERTO Choir**

Church of St. Vojtěch

December 1, 3.00 pm – 5.30 pm

**Christmas Markets Opening** – Old Bohemian hog-killing time, children ZOO, Maxim Turbulenc Band performance, Children Choir of Ústí, Christmas tree blessing, fireworks, Christmas decorations lighting, Christmas keys of the town devolving upon Little Jesus, Spirituál kvintet Band performance

Mírové náměstí Place in Ústí nad Labem

December 5, 4.00 pm-7.00 pm

**St. Nicolaus Show** – competitions and songs with Radio Fajn North Music moderators,

Mírové náměstí Place in Ústí nad Labem

December 6-7, 3.00 pm-5.00 pm

**Czech Christmas Tradition** – fairy-tale personages showing Bohemian Christmas tradition, competition for children, music performances, children ZOO and much more (also two next weekends)

Mírové náměstí Place in Ústí nad Labem

December 7, 5.00 pm

**II Ticket Night Advent Concert** – “Christmas

Mass of Edmund Pasch”

Church of St. Vojtěch

**Advent Concert of North Bohemian String Quintet**

Church of Simon and Juda in Mojžíř

December 9, 8.00 pm

**Wallachian Christmas** – Jarmila Šuláková

with Fleret Band

National House in Ústí nad Labem

December 12, 8.00 pm

**Jazz Christmas Dixieland**

National House in Ústí nad Labem

December 13, 4.30 pm

**Advent Concert of North Bohemian String Quintet**

Virgin Mary Ascension Church

December 13-14, 9.30 am-4.00 pm

**Christmas in the Open-air Museum** – handicraft and traditional work shows Folk Architecture Museum in Zubrnice

December 14, 5.00 pm

**III Ticket Night Advent Concert** – Christmas

with C&K Vocal Band

Church of St. Vojtěch

December 18, 7.45 pm

**Ave Maria – Christmas 2008** – beneficence concert

Virgin Mary Ascension Church

December 20, 5.00 pm

**J. J. Ryba – Bohemian Christmas Mass** (also

on December 23 from 7.00 pm)

North Bohemian Opera and Ballet Theatre

in Ústí nad Labem

December 22-23, 3.00 pm-5.00 pm

**Waiting for Little Jesus** – loosely constructed



programme with theatre performance for adult and children

Mírové náměstí Place in Ústí nad Labem

December 24, 10.00 pm

**Christmas Eve Singing**

Lidické náměstí Place in Ústí nad Labem,

Mírové náměstí Place in Ústí nad Labem

December 26, 1.00 pm

**Christmas Singing** – Christmas programme, theatre performance, carols singing Zoological Garden in Ústí nad Labem, beast pavillion

More information and full programme on [www.usti-nad-labem.cz](http://www.usti-nad-labem.cz)



## Advent in Klášterec nad Ohří

The town of Klášterec nad Ohří is preparing for a winter tourist season and prepared a winter visitor's 3K Card for its visitors. Your journey to the north-west of Bohemia can thus be cheaper and more pleasant.

Christmas time in Klášterec nad Ohří will start on the first Advent Sunday, November 30. Already in the morning you can visit Christmas Fair with a rich cultural programme at the main square. Christmas songs, competitions for children and drinking mulled wine, but also from 2 pm you can visit opening of the exhibition "Klášterec Bethlehem" in the gallery at the square. The programme will end at 6 pm with the traditional firework.



**i Tourist Information Centre**  
nám. Dr. E. Beneše 86  
431 51 Klášterec nad Ohří  
Tel.: +420 474 376 431  
E-mail: icklasterec@muklasterec.cz  
[www.goklasterec.cz](http://www.goklasterec.cz)



## Žatec

Also in Žatec, a town in Northern Bohemia, the home town of beer, you can enjoy approaching Advent and Christmas time with these events.

*December 1 (7.30 pm)*

**Jára Cimrman Theatre**, "Posel z Liptákova" – a performance for wide public  
Žatec Theatre

*December 12*

**Jaroslav Uhlíř for Children**, songs from popular tv fairy-tales  
Žatec Theatre

*December 4*

**Christmas Tree Lightening**, traditional event, Bethlehem and decorations, cultural programme  
Náměstí Svobody Place

*December 5*

**St. Nicolaus Present Box**, St. Nicolaus allurements, devilish whirl, competitions, carols, presents

*December 5 and 6*

**Christmas Fairs**, middle-age market place and music, Christmas customs, advent wreath and candles making, nut shells floating, Christmas ginger bread decorating, tumblers and jugglers performance

**i Tourist Infocentre**  
nám. Svobody 1  
438 24 Žatec  
Tel./fax: +420 415 736 156  
E-mail: infocentrum@mesto-zatec.cz  
[www.mesto-zatec.cz](http://www.mesto-zatec.cz)



## Royal Town of Chomutov

The town of Chomutov in Northern Bohemia can be visited throughout the year for many reasons. Historical centre, Podkrušnohorský Zoopark, Kamencové jezero Lake, or Bezručovo údolí Valley. However, the atmosphere of the traditional Bohemian Christmas can be experienced only once a year.



### Christmas Tradition in Krušnohoří Region

11/30, 12/7, 14 and 21: Advent concerts (7.00 pm, St. Ignatius Church)

11/30: Bethlehem Opening in the Open-air Museum Stará Ves (2.00 pm -4.00 pm, Podkrušnohorský zoopark)

12/5: Christmas Tree Lightening, fireworks (5.00 pm, náměstí 1. máje Place)

12/7: Chomutov Dancing Gala and Grand Prix of Chomutov Town (2.00 pm, Town Theatre)

12/7,14 and 21: Advent Sundays in the Open-air Museum Stará Ves (2.00 pm -4.00 pm, Podkrušnohorský zoopark)

12/10: Christmas Fair Opening, tree decorations, ice-skating area opening (9.00 am, náměstí

1.máje Place, fairs are being held till 12/23)  
12/11: Kindergarden at the stage, performance of kindergarden children (3.00 pm, náměstí 1. máje Place)

12/12: Christmas with Dáda Patrasová (4.00 pm, náměstí 1. máje Place)

12/15, 16, 17: Christmas with the School (4.00 pm, náměstí 1. máje Place)

12/16, 20: Christmas View from the Town Tower (4.00 pm-6.00 pm, Town Tower)

12/18: Christmas Truck Coca-Cola (3.00 pm, náměstí 1.máje Place)

12/19: Christmas Krušnohor, a band performance (5.00 pm, náměstí 1. máje Place)

12/20: Stolen Christmas, entertaining afternoon for children full of presents, a concert of

N.Urbánková (4.00 pm, náměstí 1. máje Place)

12/24: Live Bethlehem in the Open-air Museum Stará Ves (10.00 am -4.00 pm, Podkrušnohorský zoopark)

12/24: Bohemian Christmas Mass (24.00, St. Ignatius Church)



**i Town Information Centre**  
Chelčického 99  
430 28 Chomutov  
Tel.: +420 474 637 460  
E-mail: infocentrum@chomutov-mesto.cz  
[www.chomutov-mesto.cz](http://www.chomutov-mesto.cz)

## Two lives, or paint what you see

Helga, the daughter of Irena and Otta Weiss, was born in Prague, on November 10, 1929. Her father (1898–1944) came from Pardubice, and mother, nee Fuchsová (1906–1990), from Prague. Little Helga had a happy childhood, and as she remembers today, her best memories are from trips with her parents to Sázava, near Zbořeny Kostelec castle ruins.



Helga Hošek – Weiss today

The irony of the fate is that she was born exactly one day after the “Crystal Night” (11/9, 1938 anti-Jewish pogrom in Germany), only several years earlier. When she was ten, Czechoslovakia was occupied by Nazis and



Irena and Otta Weiss

fascism took its rule with its “new orders”. Because of her non-Aryan origin, she had to finish her education, and after her 12th birthday, the whole family had to be transported to Terezín (Dec 7). The first part of Helga’s life had come to an end.



In summer at Sázava

In Terezín she was placed to the girl’s home, at the barack No 24. Because she loved painting since she was a young girl, she took with her some crayons, watercolours and papers, and continued painting. One day before Christmas



Helga three days before her transportation to Terezín

she sent to her father a picture of a snowman. After some time she got an answer from him: “Go on painting what you see!” Her paintings survived the concentration camp, thanks to her uncle Josef Polák, who managed to hide them and walled them in.



The picture Memento

Helga spent in Terezín 3 years and in October 1944 was transported to Osvětim. Here she was extremely lucky. She was among 99 girls chosen for work in Germany, even if she was under their age. She worked in an aircraft factory and later she was departed



Letters from Terezín

to the concentration camp in Mauthausen. Here she survived with her mother until the deliberation by Americans.



Helga's project of the memorial desk

Return to Prague was short and hopeful. They hoped that her father will come back, too. They were waiting very long time, but in vain.

After the war she graduated grammar school, and a school for graphics too. She was shortly also a pupil of professor Emil Filla. She married famous bassist of the Czech Radio Symphonic Orchestra Jiří Hošek, they had a daughter Kateřina and a son Jiří who is after his father. He is a violoncellist and a docent at AMU. The daughter of Jiří, Dominika, is a promising cellist and at the time studies in Izrael.



Helga with her husband Jiří

Helga has never stopped painting. Her paintings provoke deep thinking. In the sixties she painted a cycle “Calvary” where she coped with holocaust, then she was a stipendist in Izrael where the cycle “Wandering around the Holy Land”. After her return home she worked at the Public school of arts for fourteen years. You can see her pictures in many exhibitions all around this country.

Luděk Sládek

## What is Hidden under the Bohemian River Surface?

Pilsen is the only town in the Czech Republic lying on the junction of four rivers. It brings a lot of advantages to the town – a rich greenery in the centre, possibilities for long romantic walks or biking along the river sides. At the river of Mže there is the second oldest ZOO in this country.

And to this ZOO we would like to invite you this autumn. There have been a unique exposition called "Bohemian River" built for 10 million CZK.



You can find educational trails here, information about fishes, shells, otters, cancers and other water animals. You can walk between the water tanks, so perhaps you could have a look into the eyes of a stout catfish, majestic pike or opulent carp.



### **A Dream of each Fisherman**

*Only in the Úhlava river and in the Bohemian river in the Pilsen ZOO you can find a unique water creature – a limnophilous fairy. It is not easy to catch a sight of her – the same possibility as in the case of a live waterman. A limnophilous fairy is a real rarity in the Pilsen ZOO, it is very shy, so it is quite possible you won't see her just for the first time. So we recommend repeated visits to our ZOO, where except of a limnophilous fairy you can get to know many other attractive creatures and animals.*

[www.zooplzen.cz](http://www.zooplzen.cz)

[www.plzen.eu](http://www.plzen.eu)



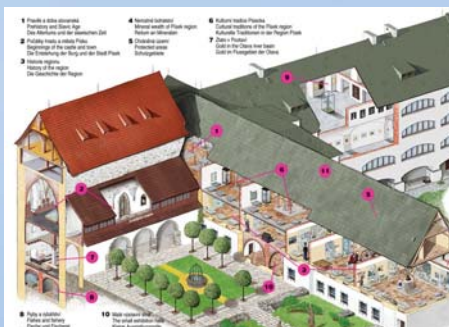


# Before Winter Time will Come to Písek...

The town of Písek in southern Bohemia has prepared for you several interesting events even in this time of late autumn and Advent. More events can be found on [www.akcevpisku.cz](http://www.akcevpisku.cz) or in a Month Cultural Programme, the complete text is on the website [www.icpisek.cz](http://www.icpisek.cz).



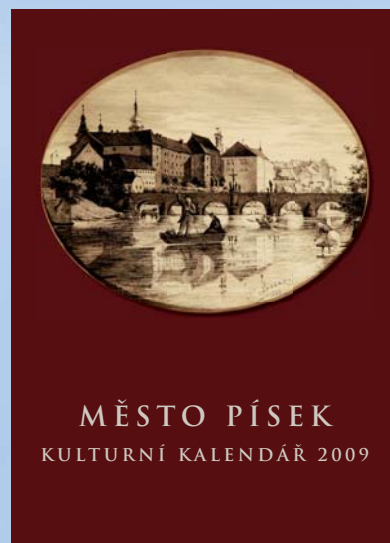
Malthouse – a new object in the town centre. It is not closing for winter, so you can visit any of interesting events which are being held here also now. The exhibition “Pop Art” until November 27 and “Kočkohrátky” (plays with toys) until December 31. The opening night of Karel Franta’s devils will be on November 30, together with Christmas workshops and afternoon bell parade for children. The Malthouse is also preparing permanent expositions of illustration and animated films for children. More information: [www.sladovna.cz](http://www.sladovna.cz).



Until December 31 you can visit Prácheň Museum and Adolf Heyduk Memorial. Next to the permanent expositions you can also see the exhibition of contemporary southern Bohemian Bethlehem makers until November 25. On Saturday December 13 in the morning, there will be Mineral Market and traditional handicraft techniques shows in the museum. [www.prachenskemuzeum.cz](http://www.prachenskemuzeum.cz)

## Advent in Písek

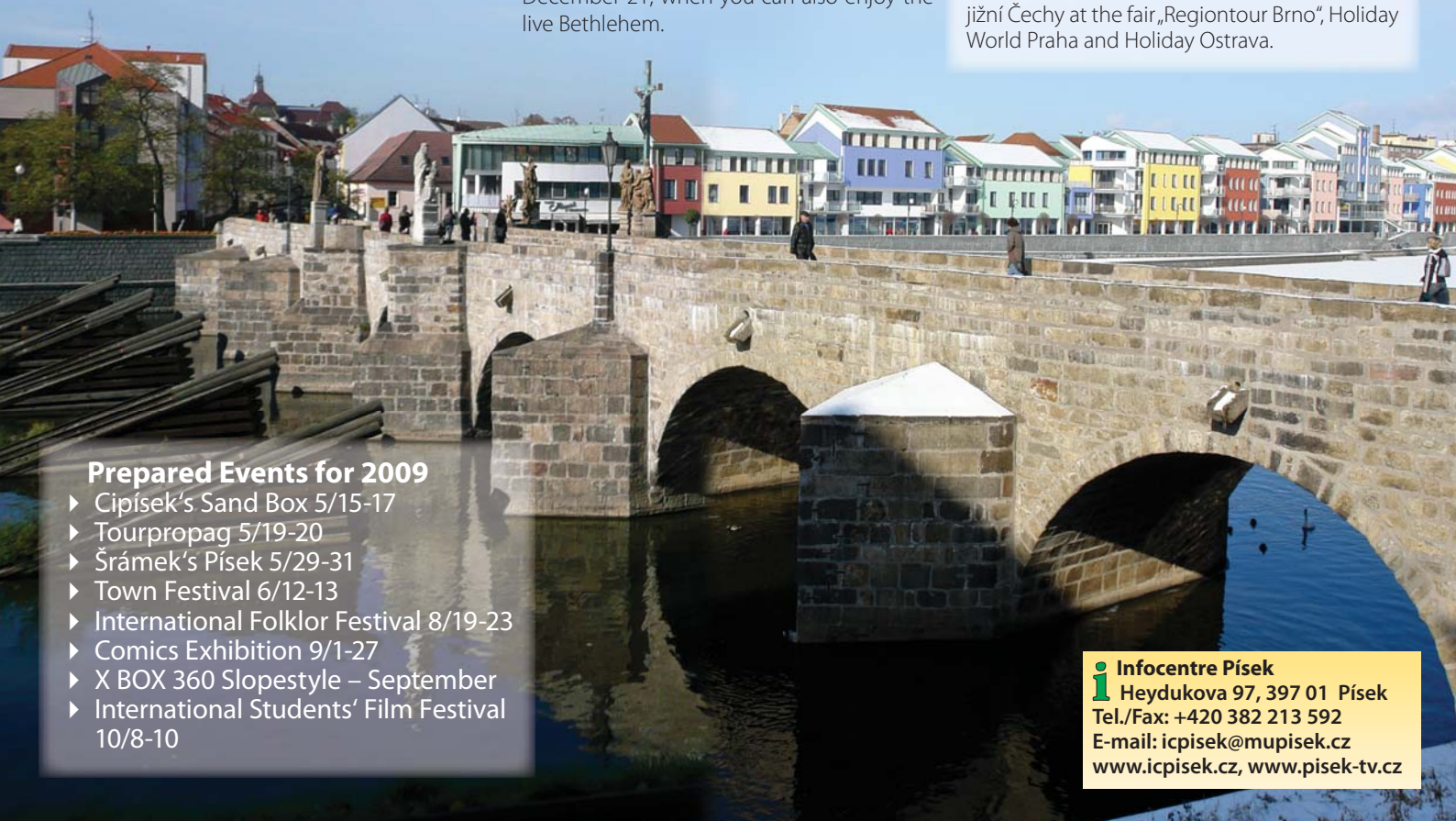
On Monday December 5, St. Nicolaus gifts-giving for children and adult will be traditionally held at Velké náměstí Square. December 3-21 you can support handicapped children and get an interesting present at the sale exhibition in the Portyč Cinema. An Advent market in the town centre will be on days December 18-20, Sborissimo sings “under the stars” on December 19 in the gothic walls, and on December 24 it is giving a Christmas Concert in the St. Trinity Hall. On Velké náměstí Square, there will be held an Advent koncert, on Sunday December 21, when you can also enjoy the live Bethlehem.



In the Infocentre a cultural calendar of Písek for 2009 with 13 pictures by Tomáš Štětka can be bought. Tomáš Štětka is the author of romantic watercolour pictures with the scenes from the end of the 19th and the start of the 20th centuries in the town. Out-of-season opening hours of the Infocentre: Mo-Fr / 9am – 5 pm.

Accommodation agency in Písek region, organized excursions and other programmes according to your demands:

**Destination Management Office „Písecko – brána do jižních Čech“**, Nádražní 2294, CZ-39701 Písek; tel.: +420 382 215 796, +420 725 774 251; e-mail: [slavik@cksaturn.cz](mailto:slavik@cksaturn.cz). You can order a new catalogue on tourism in Písek region, which will be available also at the stand Písek / jižní Čechy at the fair „Regiontour Brno“, Holiday World Praha and Holiday Ostrava.



## Prepared Events for 2009

- ▶ Cipísek’s Sand Box 5/15-17
- ▶ Tourpropag 5/19-20
- ▶ Šrámek’s Písek 5/29-31
- ▶ Town Festival 6/12-13
- ▶ International Folklor Festival 8/19-23
- ▶ Comics Exhibition 9/1-27
- ▶ X BOX 360 Slopestyle – September
- ▶ International Students’ Film Festival 10/8-10

**i Infocentre Písek**  
Heydukova 97, 397 01 Písek  
Tel./Fax: +420 382 213 592  
E-mail: [icpisek@mupisek.cz](mailto:icpisek@mupisek.cz)  
[www.icpisek.cz](http://www.icpisek.cz), [www.pisek-tv.cz](http://www.pisek-tv.cz)

# Cross-country Skiing Paradise

**White plains, breath taking climbing and wild down hills**



Cross-country skiers love hundreds of km traces and international race "Golden Ski" (Zlatá lyže). In the area of Žďárské vrchy Hills in the northern part of the region, there are hundreds of trails which are recorded by GPS and immediately published on the website of Novoměstsko region (<http://lyzovani.nmnm.cz>) and Žďársko ([www.ab-sport.cz](http://www.ab-sport.cz)). You can plan your trip, or when in the terrain you can accommodate your route in kiosks there. Skiing possibilities are also in other parts of

the region. Jihlavské vrchy Hills, Javořice and Čerřínek Peaks have 50 km long traces. Favourite is also ski centre sv. Anna in Chotěboř, or Fajtův kopec Hill in Velké Meziříčí region, both with 20 km shaped traces. Come to see us!

### Learn your children to ski without crowds

In our region, there are also possibilities for downhill skiing for families with children, skiing courses and for skiers-beginners. There are three dozens pistes, 300 - 600 m long. Artificial

snowing, shapes slopes and good conditions during whole winter seasons provides you with comfortable holiday.

Pistes list and several recommended tips for cross-country skiing can be found in the catalogue **VYSOČINA IN WINTER** which can be got on [www.region-vysocina.cz](http://www.region-vysocina.cz) in the section Edice, or on the address Vysočina Tourism, Žižkova 16, 586 01 Jihlava, tel. 564 602 555, e-mail: [info@vysocinatourism.cz](mailto:info@vysocinatourism.cz).



# Museums and Galleries don't Sleep in Winter

Since this September the visitors to Vysočina can buy a collective entrance fee to the museums and galleries. It enables a cheaper entrance fee to 12 cultural organizations (4 museums and 3 galleries, incl. their 5 branches). It can be bought in three variations – a full entrance fee (120 CZK), reduced entrance fee (60 CZK) and entrance fee for schools (300 for a class). A collective full or reduced entrance fee expires on December 31, 2008, and school entrance fee on June 30, 2009. It is not personal, so can be used by more persons.

### Museum and Galleries, which can be visited in the collective entrance fee:

- Museum of Vysočina Region Havlíčkův Brod  
[www.muzeumhb.cz](http://www.muzeumhb.cz)
- Museum of Vysočina Region Jihlava  
<http://muzeum.ji.cz>
- Museum of Vysočina Region Jihlava, a branch Telč  
<http://muzeum.ji.cz>
- Museum of Vysočina Region Jihlava, a branch Třešť  
<http://muzeum.ji.cz>
- Museum of Vysočina Region Pelhřimov  
[www.muzeumpe.cz](http://www.muzeumpe.cz)
- Museum of Vysočina Region Třebíč  
<http://zamek-trebic.cz>
- Gallery of arts in Havlíčkův Brod  
[www.galeriehb.cz](http://www.galeriehb.cz)
- Horácko Gallery in Nové Město na Moravě  
<http://hg.nmnm.cz>
- Regional Gallery of Vysočina in Jihlava  
[www.ogv.cz](http://www.ogv.cz)

P.O.Box 85, 586 01 Jihlava, tel. 564 602 555, e-mail: [info@vysocinatourism.cz](mailto:info@vysocinatourism.cz).

[www.region-vysocina.cz](http://www.region-vysocina.cz)



More details about these museums and galleries can be found on [www.region-vysocina.cz](http://www.region-vysocina.cz) or in a booklet **THE HERITAGE OF THE PAST**, which can be ordered at this address: Vysočina Tourism, allowance organization, Žižkova 16,

# South Moravian Region – wine and hundred years old history

South Moravia is friendly like home, but also remote like a fading memory. It offers open arms to its visitors and a lot of experiences, tastes and colours. Through it Christianity entered Europe, along local rivers many towns were built, on its slopes there are numerous vineyards and orchards.

South Moravia is rich in various sightseeings, from its first inhabitants artefacts to modern pieces of art, from art masterpieces and castle beauties to unique natural sceneries. You can enjoy also folklor, theatre and music festivals, markets and exhibitions here, as well as many cultural, social and sport events.

So if you are looking for a nice destination for a trip, don't hesitate and visit this picturesque and specific region which has been loved by many throughout its history.

## Excursion Tips:

### St. Martin wines (Nov 11)

St. Martin's Day is connected with young wine tasting. This event is more and more popular in our region. Gormands will enjoy it, since young wine is serving with a roasted goose. More information, incl. places, can be found on:

[www.wineofczechrepublic.cz](http://www.wineofczechrepublic.cz)



### 203th Anniversary of Slavkov Battle (Nov 27 - 29)

Slavkov at Brno, castle, Historic Museum Slavkov u Brna, Slavkov battle field. A traditional event for remembering of the Battle at Slavkov on December 2, 1805, a programme with soldiers in contemporary uniforms,



battle reconstruction, a march, firework, handicraft market. [www.zamek-slavkov.cz](http://www.zamek-slavkov.cz)



### Bethlehem Exposition (Nov 23 – Dec 6)

8th year of the exposition with a programme and Christmas decorations shopping. A festive exposition vernissage is on Sunday No-



vember 23 at 3:00 pm in the Culture House Horní Valy, Hodonín. [www.hodonin.cz](http://www.hodonin.cz)

### Let's Have Fun and Joyful Time (Dec 6 - 10)

A pre-Christmas programme showing life and work in a Moravian village from the first



advent Sunday to The Magi Time. Strážnice – Open-air Museum. [www.nulk.cz](http://www.nulk.cz)

### Slovácko hog-killing Time (Dec 6)

Traditional Slovácko hog-killing time, delicacies all day long in Mlynářská restaurace; night session with harmonica and pork feast. The area of Bukovanský mlýn Mill, Bukovany.

[www.bukovansky-mlyn.cz](http://www.bukovansky-mlyn.cz)



### Christmas Market (Dec 12-21)

Christmas Market, Christmas present shopping, relaxation and fun for the whole family. Výstaviště 1, Veletrhy Brno. [www.bvv.cz](http://www.bvv.cz)

[www.jizni-morava.cz](http://www.jizni-morava.cz)



# BRNO a REGIONTOUR 2009

GO and REGIONTOUR 2009  
information about travelling and tourism



**From January 15-18, 2009 the International Market of Travelling and Tourism will be held at the BVV Trade Fairs in Brno.**

All important local travel agencies of almost each region and town in the Czech Republic, as well as from abroad take part in Trade Fairs each year. Except travel information you will get information about congress and incentive tourism, cultural tourism and golf.

**Touristic regions from this country and abroad**

It specializes in cultural tourism. Cultural heritage of our regions (castles, galleries, museums) wants to support incoming and travel industry.

Also the town of Brno will be featuring at the Fair, together with its partner towns: Austrian Vienna, British Leeds, Kaunas in Lithuania, Ukraine



Kharkov, Leipzig and Stuttgart in Germany, Polish Poznan, Dutch Utrecht and French Rennes.

Visitors will get information materials, maps and catalogues of the regions in question, and discuss in person with representatives both of Brno and partner towns.

*The town of Brno heartily invites you to the fair Regiontour. Welcome!*

B | R | N | O

[www.bрно.cz](http://www.bрно.cz)  
[www.bvv.cz](http://www.bvv.cz)





**Tickets available through our website  
and by telephone**

**eTiket** 

**[www.eshop.cd.cz](http://www.eshop.cd.cz)**

**TeleTiket** 

**+420 840 112 113**

**Comfortable shopping  
with guaranteed seat reservation**



# CHOOSE THE RIGHT VACATION



19<sup>th</sup> International  
Travel Trade Fair



18<sup>th</sup> International Fair  
of Regional Tourism



## 15.–18. 1. 2009

Brno – Exhibition Centre

[www.bvv.cz/go](http://www.bvv.cz/go)

[www.bvv.cz/regiontour](http://www.bvv.cz/regiontour)

Central European  
Exhibition Centre



BW Trade Fairs Brno  
Výstaviště 1  
647 00 Brno  
Czech Republic  
Tel.: +420 541 152 984, 823  
Fax: +420 541 153 062  
go@bvv.cz  
regiontour@bvv.cz

BVV  
  
Veletřhy  
Brno



**AQUAPARK**



**ALL UNDER ONE ROOF**



**JESTĚD - 5 km**



**CONGRESS CENTRE**



**WELLNESS CENTRE**



**RESTAURANTS AND CATERING**

# THE LARGEST COVERED ENTERTAINMENT, SOCIAL AND HOTEL COMPLEX IN THE CZECH REPUBLIC



**BOWLING**



**SAUNA KLUB AFRIKANA**

**AQUAPARK • LUNAPARK • IQPARK • LABYRINTH  
HOTEL \*\*\*\* • CONGRESS CENTRE • CASINO  
WELLNESS • FITNESS • BOWLING  
INCENTIVE • TEAMBUILDING PROGRAMS  
COMPLEX TOURIST SERVICES  
ISO 9000:2001 • HOREKA \*\*\*\***



**AQUAPARK**



**HOTEL\*\*\*\* BABYLON**

**CENTRUM BABYLON, a. s., Nitranská 1, 460 12 Liberec, CZ  
GPS: 50°45'32" N, 15°03'08" E, tel.: +420 485 249 202, +420 485 249 212  
fax: +420 485 249 946, e-mail: touristservice@centrumbabylon.cz**

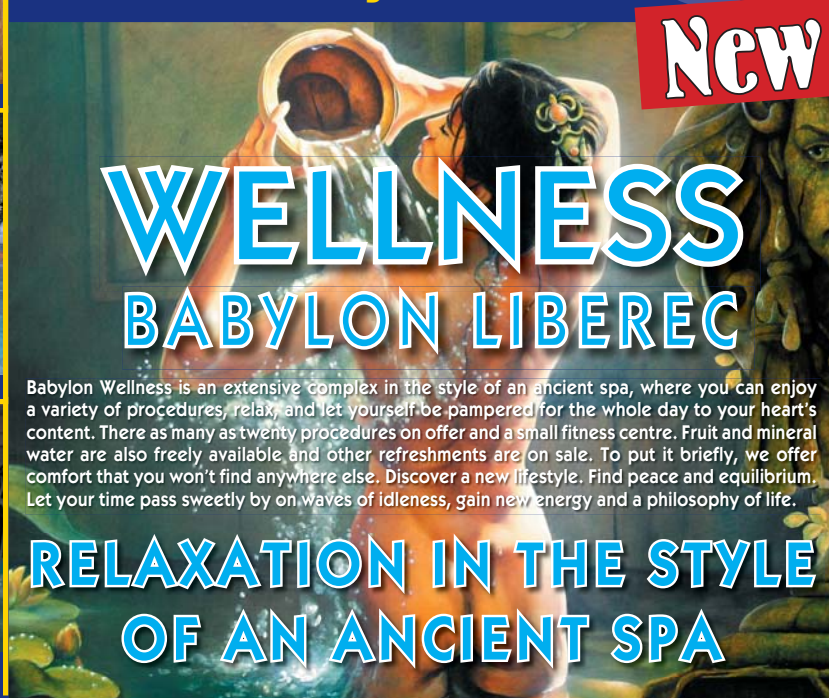
**www.BabylonLiberec.cz**



**LUNAPARK**



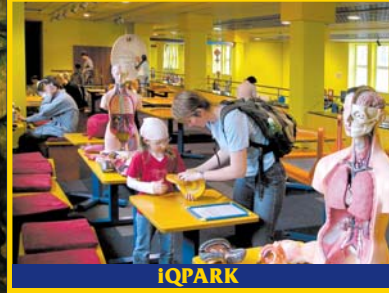
**WELLNESS CENTRE**



# WELLNESS BABYLON LIBEREC

Babylon Wellness is an extensive complex in the style of an ancient spa, where you can enjoy a variety of procedures, relax, and let yourself be pampered for the whole day to your heart's content. There as many as twenty procedures on offer and a small fitness centre. Fruit and mineral water are also freely available, and other refreshments are on sale. To put it briefly, we offer comfort that you won't find anywhere else. Discover a new lifestyle. Find peace and equilibrium. Let your time pass sweetly by on waves of idleness, gain new energy and a philosophy of life.

# RELAXATION IN THE STYLE OF AN ANCIENT SPA



**IQPARK**



**IQPARK**



**LABYRINTH**